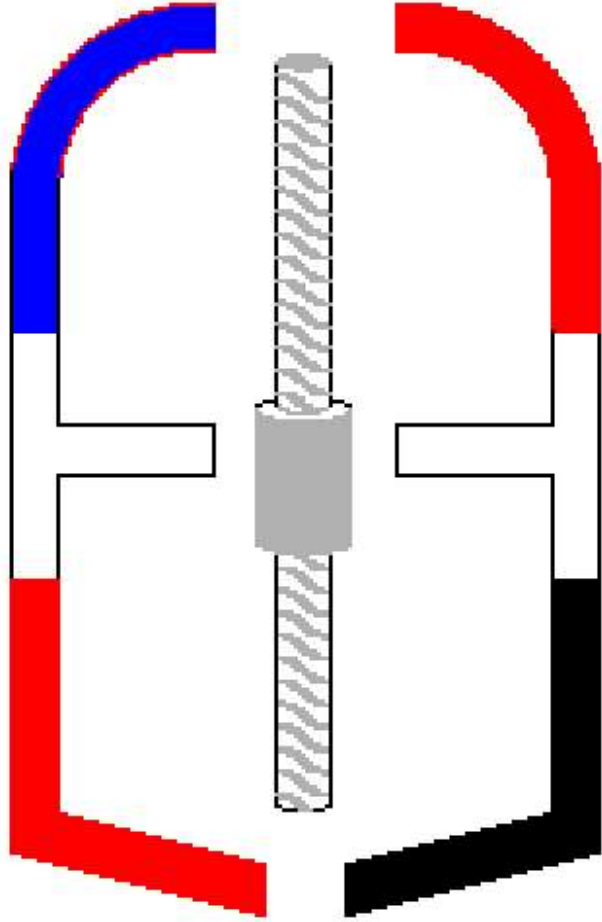


Extra Egypt

Threading & Couplers



الشركة عضو فى اتحاد الصناعات المصرية رقم ٣٤٠٠

Industrial Area. 15 of May City, No., 1,2,3 Wing 3, Magmoaa 6
Cairo, Egypt

Office Tel & Fax: (202) 25513184 / 25513155 Cellar: 010 652 7484

Email: extra_egypt@hotmail.com

Site: www.extra-egypt.com



جمهورية مصر العربية
وزارة التجارة والصناعة
غرفة الصناعات الهندسية
اتحاد الصناعات المصرية

شهادة عضوية

تشهد غرفة الصناعات الهندسية بأن المنشأة الصناعية:

أ. كستر الرجيب - محمد السيد - السيد عبد المنعم

عنوانها: مدينة ٥١٥٠٠٥ - الجيزة - المنطقة الصناعية الجديدة
قناخ ٢٢ محل رقم ٢٦

مسجلة بعضوية الغرفة برقم: ٢٤٠٠

حررت هذه الشهادة تطبيقاً للقرار الوزاري رقم ٤٣٧ لسنة ١٩٩٢ بناءً على طلب المنشأة.

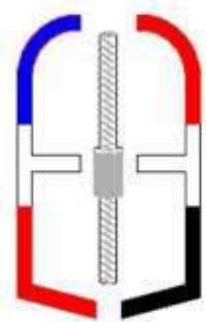
المدير العام

تاسد



تنتهى فى: ٢٠١٦/٦/٢٠

رقم الشهادة: 5402



Extra Egypt

Re: Submission Documents

Project:

Dear Sirs,

We are pleased to enclose herewith our submission documents for the supply of mechanical couplers.

We would like to underline that mechanical couplers have been successfully used in the Nile Amarante Hotel (Consultant: Dr. Aly Abdel-Rahman, E.C.O.)

& Safi Ellaban Bridge, Marroitya Bridge with Arab Contractor (Consultant Moharam Bakhom) & Capital Business with Sefi Fontec Co..

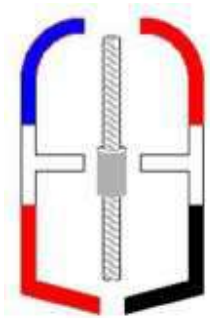
[Mechanical couplers fully comply with all international specifications related to mechanical splices i.e: ACI 318 \(1999\), BS 8110:89, DIN 1045 \(1988, NF A35-020 \(1999\) as well as the Egyptian Code Chapter 7-3-2-1, 1995.](#)

We are able to supply the complete system (coupler + thread) from our facilities to ensure the coherence of the system.

We are at your service for any further information you require and remain,

Yours Sincerely,

Mohamed El-Sayed Khireldin
General Manager



Extra Egypt

Dear Customer,

We are specialist sub contractor for technical civil works. Extra Egypt was thus well equipped to tackle the huge growth of the construction sector, with its products, Couplers, a parallel thread device used to connect together two reinforcement steel bars casted in large concrete structures.

Extra Egypt has a complete range of mechanical splices "Couplers for Steel Bar" to move beyond tradition and offer simple solution to cross over Traditional Design (overlapping, welding, etc.). Our system does the following:
Easy Manufacturing, Easy Rebar Fixing, Easy Installation, Reduce Steel Wastage, Faster Concreting Cycle, No Hidden Costs, Quality Manufacturing, Design Safeties, And Unrivalled Performance.

The best and most efficient service prices and supply and also fill the future demands with ability to change rapidly after customer's requirement

We search close relationship with our customers

Best Regards,

Mohamed El-Sayed Khireldin

General Manager

The Extra Egypt System

The essence of the Extra Egypt system is to build a parallel thread on a cold-forged end of reinforcing bar. They are then spliced together by means of a mechanical coupler. This unique process has proven itself over a decade to be the perfect splice for the construction industry.



Cutting

The end of the reinforcing bar is sawn square.



Cold Forging

The sawn end of the reinforcing bar is then enlarged by cold forging process.

The core diameter of the bar is increased to a predetermined diameter.

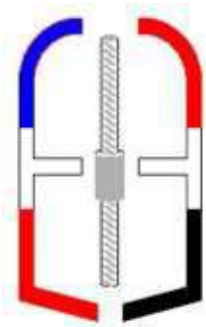


Threading

Finally, the enlarged end is cut (or rolled) to a standard metric thread.

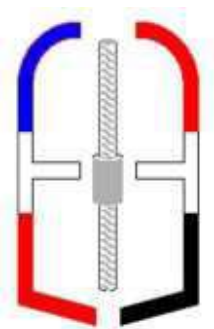


The Complete Joint

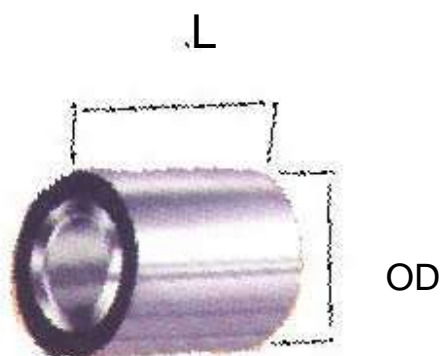


Extra Egypt

TYPE "A" SPLICE			TYPE "B" SPLICE		
BOTH BARS HAVE A THREAD LENGTH EQUAL TO ONE THREAD DIAMETER.			ONE BAR HAS A THREAD LENGTH EQUAL TO ONE THREAD DIAMETER, THE OTHER HAS A THREAD LENGTH EQUAL TO TWO THREAD DIAS.		
A	B	C	A	B	C
12	M14X2.0	14 - 16mm	12	M14X2.0	28 - 30mm
14	M18X2.5	18 - 20.5mm	14	M18X2.5	36 - 38.5mm
16	M20X2.5	20 - 22.5mm	16	M20X2.5	40 - 42.5mm
18	M22X2.5	22 - 24.5mm	18	M22X2.5	44 - 46.5mm
20	M24X3.0	24 - 27mm	20	M24X3.0	48 - 51mm
22	M27X3.0	27 - 30mm	22	M27X3.0	54 - 57mm
25	M30X3.5	30 - 33.5mm	25	M30X3.5	60 - 63.5mm
28	M33X3.5	33 - 36.5mm	28	M33X3.5	66 - 69.5mm
32	M36X4.0	36 - 40mm	32	M36X4.0	72 - 76mm
36	M42X4.5	42 - 46.5mm	36	M42X4.5	84 - 88.5mm
40	M45X4.5	45 - 49.5mm	40	M45X4.5	90 - 94.5mm



ExtraEgypt



Dimensions of Couplers (all units are in millimeters)

Bar Dia. (mm)	Metric Thread x Pitch	Standard Coupler		
		Code	L	OD
12	M14X2.0	C12M14	28	25
16	M20X2.5	C16M20	40	30
18	M22X2.5	C18M22	44	35
20	M24X3.0	C20M24	48	38
22	M27X3.0	C22M27	54	40
25	M30X3.5	C25M30	60	45
28	M33X3.5	C28M33	66	48
32	M36X4.0	C32M36	72	52
36	M42X4.5	C36M42	84	58
40	M45X4.5	C40M45	90	70

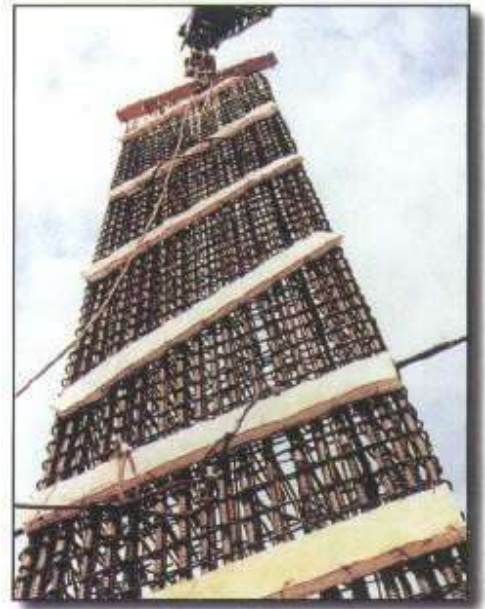
L. = Length

OD = Out Side Diameter

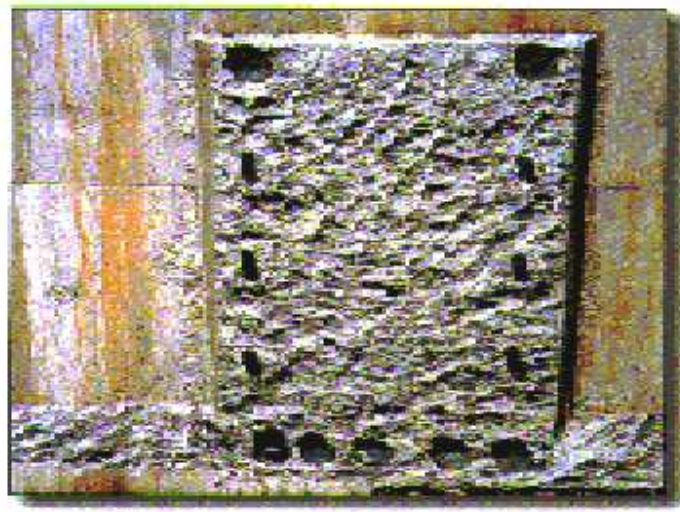
The Most Common Applications of Couplers



Slab Connections



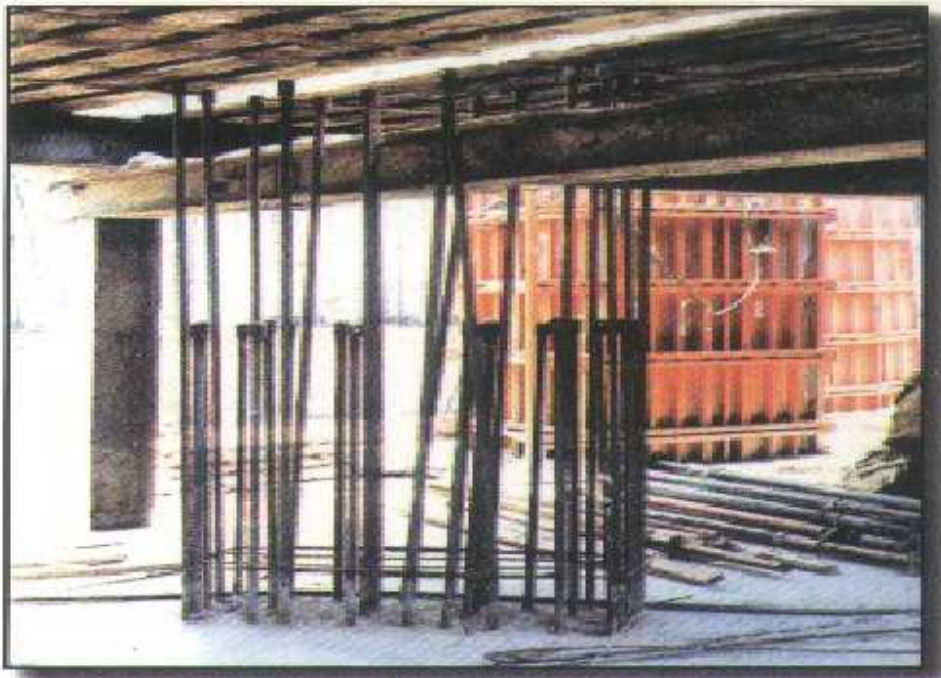
Diaphragm Wall Cages



Future Extension



Micro piles & Soil Nails



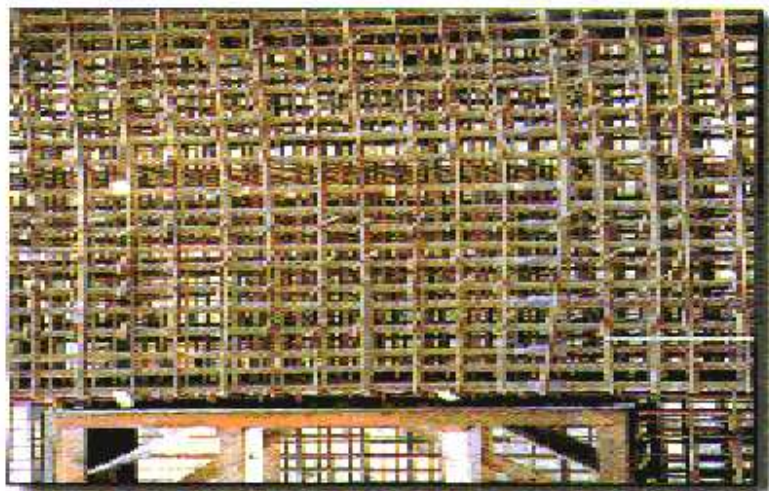
Temporary Obstruction



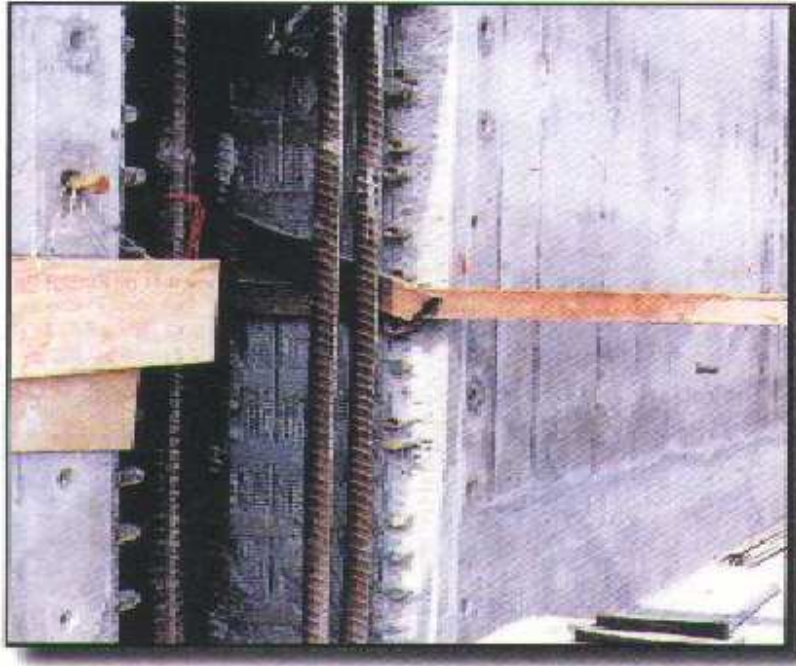
Top – Down Construction



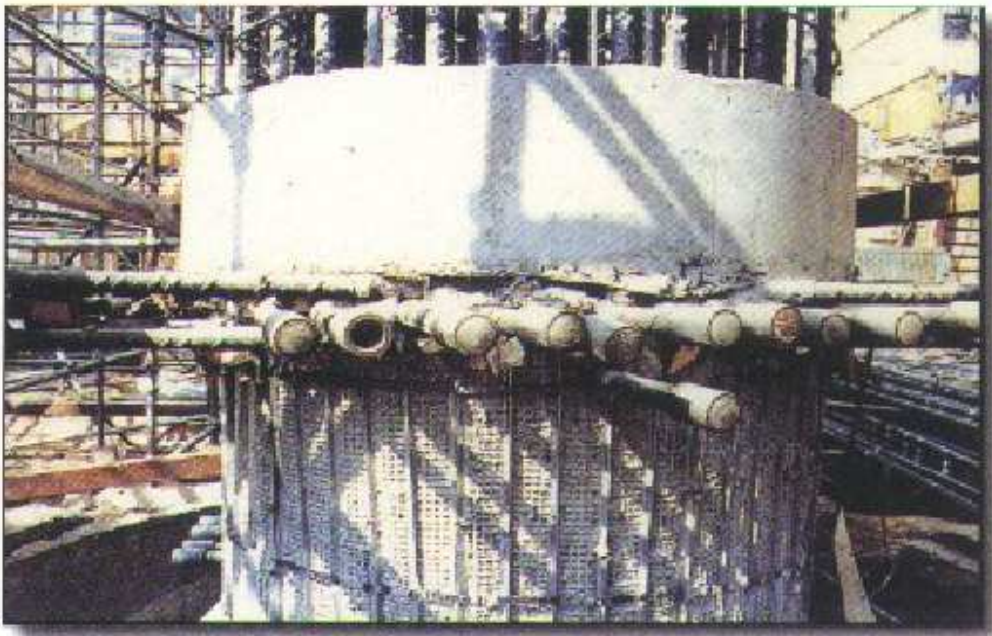
Columns and Piles



Congested Area



Temporary Opening



Beam Connections